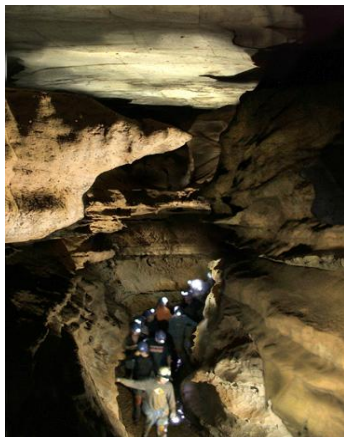


# 2011 SPECIAL SCOUTING EDITION

### Did You Know That:

- Our wild cave program was established in 1973.
- The reason that our cave remains at a near constant 60° is that this is the average year round temperature of Chattanooga. Air entering the cave quickly becomes the temperature of the surrounding rocks.
- Karst is the term given to areas where dissolving limestone plays a major part in land erosion. Karst areas have caves, springs, sinkholes, and disappearing streams.
- The cave actually experiences seasonal changes. What happens above the cave will eventually impact the cave. Consequently, the cave is wettest in the winter and spring and driest in the summer and fall.



Wild Cave Expeditions explore the inner portions of the cave system. We provide all needed equipment: lights, helmets, gloves, pads

## HOME TO TENNESSEE'S PREMIERE WILD CAVE EXPEDITIONS

A fascinating and educational scouting experience awaits your group just outside of Chattanooga at Raccoon Mountain Caverns.

Caving is an outstanding scout activity because it is a cooperative group activity which builds self-esteem. There is no race to the finish line, but rather each scout helps other scouts to overcome obstacles encountered during the expedition. Caving is an exceptional bonding experience which builds lifelong memories.

Wild cave expeditions are our most challenging tours in terms of physical activity. These are our classic "get down and dirty" tours which will take your scouts into the inner portions of our cave system. They will walk, crawl, slide, and climb as they explore those portions of the cave that are beyond the lighted paths of the Crystal Palace Tour.

Scouts will view a top-rated cave in its most natural state. The most commonly heard comment that we hear from scout groups is that our cave is by far the very best that they have ever explored.

Many people with claustrophobia have enjoyed our wild cave expeditions as the cave entrance is at ground level and you almost immediately enter the third largest room in

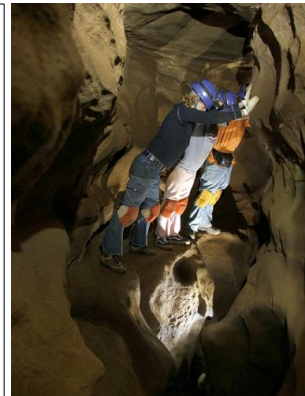
the cave. Small areas typically almost always lead into larger areas. Our cave also experiences a chimney effect due to temperature differentials, so there is always plenty of fresh mountain air circulating throughout the cave.

We offer 2, 4, and 6 hour wild cave expeditions, along with an unforgettable overnight tour where you actually sleep in the cave. All needed equipment is provided, including gloves, helmets, pads, and lights.

### Don't Forget To Visit Us On-Line

We invite you to explore either of our two web sites at [www.raccoonmountain.com](http://www.raccoonmountain.com) or [www.wildcave.com](http://www.wildcave.com) for additional information.

Our famous "Canyon Passage" is optional on the 2, 4 and 6 hour tours and the overnight expeditions. It is actually more mentally than physically challenging. Groups with scouts ages 6-10 take an alternate route around the canyon passage.



## MERIT BADGES ARE MORE POPULAR THAN EVER — SCHEDULE THEM TODAY!

**Geology Badge:** Raccoon Mtn. Caverns is proud to be one of the few caves in the country with a full-time geologist on staff. This permits us to better assist young scouts complete the requirements for the Geology Badge.

All materials for your scouts to complete the required rock collection are included. Allow ~ 2 1/2 hrs.

**Forestry Badge:** Your scouts will take a guided hike through a portion of our

forest where they will study trees, shrubs, ring patterns and forest management. They will cover all the requirements of the forestry badge. All supplies are provided. Allow ~ 2 hours.

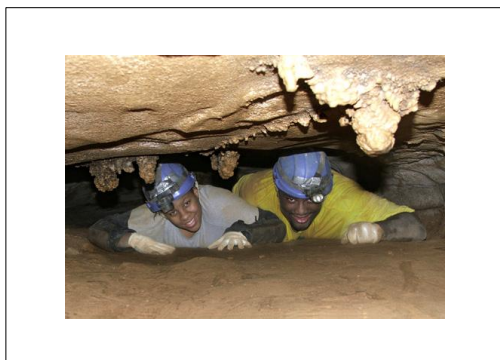
*(continued next page)*

## MORE MERIT BADGES

**Soil & Water Conservation Badge:** Your scouts can fulfill all of the requirements for this badge as they learn about soil, erosion, conservation practices, watersheds, and water pollution.

to keep. Please allow ~ 3 - 5 hours.

**Environmental Science Badge:** Scouts will learn the history of environmental science in America and the contributions the Boy Scouts have made. Environmental related definitions, ecosystems, environmental impact statements and careers are discussed and endangered species are investigated.



Caving is Fun !

Please allow ~ 2 hours.

**Orienteering Badge:** Your scouts will learn how to read a topographic map, how to take and follow a compass bearing, how to transfer a map direction to a compass, declination, descriptive clues, and offset. They will also take part in a cross-country course.

Your scouts are provided with all needed supplies, including an orienteering compass which they will get

Experiments illustrating soil erosion, mediating oil spills and outdoor areas are studies. Scouts have to complete two requirements (air pollution and pollution prevention) that require seven days of observation and practice on their own in order to complete the badge. Materials and instructions are provided. Please allow ~ 3- 3 1/2 hours.

Note: It is very important that badge classes be

scheduled in advance so that we can have appropriate staff and materials available for your group.

Please make every effort to be on time for your appointment. Thank you for your understanding.

A \$4.00 per scout per badge surcharge applies if your group is not caving with us.

*A note about our rates*

All of our rates are plus Tennessee sales tax. We have a Federal 501(c)3 certificate on file for all troops affiliated with the Boy Scouts of America. All other groups must have either or a Tennessee Tax Exemption Certificate or a Federal 501(c)3 certificate. Federal Tax ID numbers (xx-xxxxxxx) are not valid for sales tax purposes.

Tax exempt groups must pay as a group in order to comply with tax exemption requirements.

*“Just wanted to say how much we enjoyed the cave exploring last night as the boys really had a good time and will have the memory for life, The Merit Badge was a first class job as well. Your straight forwardness with them having to complete the requirements was appreciated and your patience with our less attentive scouts was a big help as well“*

### RACCOON MOUNTAIN=EXCEPTIONAL VALUE 2011 SCOUT GROUP RATES (OUR BEST)

|                           |      |
|---------------------------|------|
| <b>Cave &amp; Panning</b> |      |
| Crystal Palace Tour       | 4.00 |
| Gem Panning (large)       | 5.00 |
| Gem Panning (small)       | 3.85 |
| Arrowhead Find            | 3.85 |
| Fossil Panning            | 5.50 |

|                              |       |
|------------------------------|-------|
| <b>Wild Cave Expeditions</b> |       |
| Eco-Expedition               | 20.00 |
| Fossil Crawl (2 hr)          | 24.00 |

|                    |       |
|--------------------|-------|
| Echo Room (4 hr)   | 30.00 |
| Gypsum Room (6 hr) | 36.00 |
| Overnight (4 hr)   | 40.00 |
| Overnight (6 hr)   | 46.00 |

|                                      |       |
|--------------------------------------|-------|
| <b>Camping Rates</b>                 |       |
| Group camp w tour                    | 3.50* |
| Group camp w/o tour                  | 4.00* |
| (* all rates are per person per day. |       |

|                        |       |
|------------------------|-------|
| <b>Badges</b>          |       |
| Forestry Badge:        | 7.00  |
| Geology Badge:         | 11.00 |
| Soil & Water           |       |
| Conservation Badge :   | 7.00  |
| Orienteering Badge:    | 11.00 |
| Environmental Science: | 11.00 |
| Webelos Geology or     |       |
| Forester Badge:        | 5.00  |
| Non-caving surcharge:  | 4.00  |

# WHITE NOSE SYNDROME UPDATE

Over a million bats have died as a result of white nose syndrome since it was discovered in 2006. It is named for the fungus that covers bats as they hibernate. It has been spreading at the rate of about 200 miles (a bat's range) each year to the south and west. It has been found in Tennessee, Oklahoma and Missouri, but not yet at Raccoon Mountain.

It is still unknown as to whether the fungus is the cause or if there is an underlying condition that allows the fungus to take over. It is very important to note that the fungus only affects bats and not humans.

Bats are the primary nocturnal insect eaters. With each bat eating about 600 insects (mostly mosquitoes) every hour during the summer, it is obvious why there is much concern for the bats.

While it is believed to be spread bat-to-bat, cave operators are taking precautions so as not to contribute to the spread of the disease. All visitors to caves are being asked to completely clean their clothes, boots, and gear before visiting any other cave. Raccoon Mountain Caverns has always provided its cavers with lights, gloves, pads, etc.

Clothes should be washed in Woolite. Boots and other gear should be completely washed to remove all organic matter and then disinfected with Lysol All-Purpose Professional Cleaner or Antibacterial Formula 409, soaked for at least ten minutes, rinsed, and allowed to air dry.

### Press a Penny—Save A Bat

A portion of the proceeds from our Penny Press machine is being donated to Bat Conservation International for WNS research.



*Covered Pavilion*

*Our covered pavilion just off of the gift shop patio can accommodate groups of up to 40.*

## EVEN MORE LUNCH & DINNER OPTIONS

Raccoon Mountain Caverns is pleased to make your trip easier with meal options:

Cici's Pizza now delivers lunch and dinner to groups at Raccoon Mountain. They are offering the following:

1. A pizza meal with a 7+ personal pizza, 2 pieces

of garlic bread, a brownie (no nuts), and a drink (Sprite or water). The cost is just \$5.00 per person.

2. The Lunch Bag+ with your choice of a turkey sandwich, ham sandwich, or all beef hot dog, chips and drink for just \$5.00 per person.

Either the pizza or lunch bag can be ordered through Raccoon Mountain. Just provide us with the final numbers a few days prior to your tour date and we will take care of the rest. You can pay for both your meal and cave tour with just one check.

## WE'VE MADE BREAKFAST EVEN BETTER

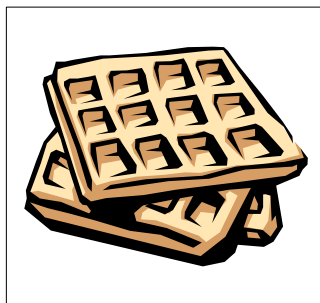
Raccoon Mountain is pleased to offer our overnight cavers even more breakfast choices.

We now offer the following choices: fresh baked biscuits, Eggo waffles, a variety of cereals, oatmeal, toast and jelly, and fresh fruit.

We also offer you a choice of fresh brewed coffee, orange juice, low fat milk, hot chocolate, and water.

Breakfast is included with all overnight expeditions.

Please let us know if anyone in your group has any special dietary needs.



We have enhanced our breakfast offerings to include waffles and fresh baked biscuits.

BBQ For Lunch? Sticky Fingers, a Chattanooga based restaurant specializing in BBQ, will deliver orders to Raccoon Mountain. Please contact them directly for ordering information.

Raccoon Mountain Caverns

319 West Hills Drive  
Chattanooga, TN 37419

Phone: 423-821-9403  
Fax: 423-825-1289  
Email:  
raccoon1@raccoonmountain.com

**We're on the web.  
Visit us at  
wildcave.com**



R. M.

*Raccoon Mountain Caverns is one of the largest caves in the south with over five and one-half miles of explored passageways. Up until the 1920's, local farmers would gather at the base of Raccoon Mountain to enjoy the large amount of cool air that would blow out from cracks in the limestone hillside. In 1929, the property owners invited Leo Lambert, a famed local caver, to explore the source of this air flow. He enlarged the opening so that people could crawl through the cracks and discovered a short cave passage that almost immediately opened into what is now called the Crystal Palace Room. This majestic room is approximately 35' tall and is the largest cave formation chamber in the south.*

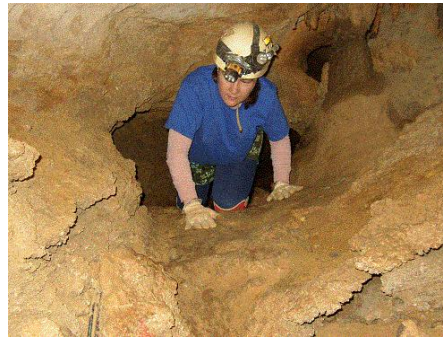
*Mr. Lambert decided to open the cave for tours and the cave opened to the public on June 28, 1931 in the midst of the great depression. It was not until the early 1950's that the bulk of the cave system began to be discovered when the Smith brothers, who owned the cave at that time and worked as cave guides, squeezed through a small opening and began to find miles of pristine cave with countless formations. Our wild cave program was begun in 1973 in response to numerous requests for natural "spelunking" tours, and has grown to become the most respected in the South. It almost seems as though Mother Nature intended for Raccoon Mountain Caverns to be explored, as it consists of miles of interlocking passageways that provides for an adventurous journey of underground discovery. We provide all needed caving equipment and highly skilled guides.*

## A WORLD OF DISCOVERY AWAITS

Aside from our ocean depths, caves are one of the least explored places on the planet. The State of Tennessee has over 8000 caves that have been discovered so far and many more are still to be discovered.

Many of us drive by mountains every day without giving any thought as to what exists beneath the surface. Limestone caverns such as Raccoon Mountain Caverns are the result of basic chemistry. That is, rain-water mixes with carbon dioxide from decaying plants and leaves and turns into a weak acid, carbonic acid (carbonated water).

The carbonic acid seeps into the cave systems through cracks in the limestone



Cavers enjoy the thrill of discovering new caves, chambers, and passageways

rocks. Along the way, the acid slowly dissolves the limestone. When the water containing the dissolved limestone encounters the cave air, the carbon dioxide is lost and the process in which the dissolved limestone re-deposits begins. This is how formations grow and it all starts with a small

drop of water. Without water, the process stops and the formations stop growing. Thus, anything done to the surface that changes surface water drainage can have a tremendous impact on a cave system beneath the surface.

Area caves are home to a variety of crickets, salamanders, and bats that make their homes within these delicate underground ecosystems.

Raccoon Mountain Caverns is operated with the primary focus of protecting and preserving our cave system. We are rewarded when guests comment that it is either the nicest or one of the nicest caves that they have visited. We invite you to come caving with us.